



## EXPARTO

was born out of a combination of passion, perseverance and belief in our own abilities. We provide complete solutions to machinery manufacturers and agricultural equipment dealers from first assembly parts, spare parts to hydraulics and transmission. We can design, manufacture and supply virtually any replacement. We are characterised by adaptability, flexibility and responsiveness. We are partners with our customers, working for our mutual success.

## QUALITY

We work with leading laboratories accredited to ISO 17025, so our products meet the quality requirements of ISO 9001 and ISO16949. We are constantly working to improve our products and raise the qualifications of our staff to ensure an even higher level of service. In order to ensure the repeatability of each delivery, we subject our product range to internal and external quality control.



**AGRICULTURAL TECHNOLOGY**

**HYDRAULICS**

**TRANSMISSION**

**HEALTH AND SAFETY (H&S)**



# AGRICULTURAL

Simplified tillage technologies such as ploughless tillage are increasingly used in agricultural practice. Ploughless technology has proven to be more efficient because it reduces operating costs, saves time and at the same time improves soil quality, thus reducing the risk of soil sterilisation. The decision to use a specific technical solution requires not only knowledge but also the selection of the right equipment. We are aware of the difficulties farmers face every day. In the field, success is not always easy to achieve, and failure is not infrequent. That is why parts have to be reliable. Reliability

and resistance to wear and tear have a direct impact on the lifespan of the machine and, as a result, the ability to prepare the field for cultivation.



# TECHNOLOGY

Cultivation discs \_\_\_\_\_

8

Hubs \_\_\_\_\_

9

Spring tines \_\_\_\_\_

10

Forks, carrying frames \_\_\_\_\_

11

3-point linkage/suspension \_\_\_\_\_

12

Suspensions for trailers and manure  
spreaders \_\_\_\_\_

13

## Cultivation discs



Notched disc, 10z, 510mm x 4mm, curved,  
6-hole hub fitting



Notched disc, 10z, 560mm x 4mm,  
6-hole hub fitting



Notched disc, 10z, 510mm x 3,5mm,  
4-hole hub fitting

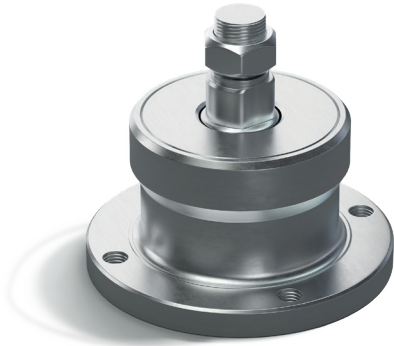


Plain disc, 460mm x 3.5mm,  
square fitting

- ☞ Made of boron steel with high quality spring steel
- ☞ Rockwell hardness test according to EN ISO 6508
- ☞ Universal - suitable for all soil tillage aggregates (hubs) of leading manufacturers

- ☞ You can choose:
  - Type: smooth / notched
  - Diameter
  - Thickness
  - Fitting - square / hub
  - Type and number of holes
  - Degree of concavity

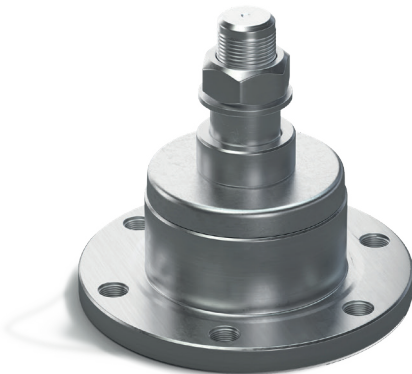
# Hubs



ODL 02



ODL 03



ODL 04



BA004

- ≡ Serviced and maintenance-free hubs
- ≡ Universal parameters at the highest European level
- ≡ Bearing unit: -1 / double bearing

- ≡ No environment pollution. Efficient, leak-proof, no dirt penetration and no grease leakage

**We design, manufacture and supply every type of disc hub and cultivation disc.**

## Spring tines



L680



L810



L880



L1100

- ≡ Made by drop forging, which provides much greater strength than cast or machined parts
- ≡ Flexible, abrasion resistant - will not crack thanks to high quality heat treated spring steel

- ≡ Adjustable length, thickness, degree of bending
- ≡ Protective coating with above-average thickness ensures years of resistance to corrosive conditions and UV rays

# Forks, carrying frames



model	size (mm)	payload (kg/mm)
2A	80x40x1000	1000*500



model	size (mm)	payload (kg/mm)
2A	100x45x1200	1500*200

- Forks for field work (agro-technical) and fork lift trucks
- Tested in accordance with ISO 2330 and ISO 2331
- Fitting dimensions according to ISO 2328
- Reinforced heel for above average load capacity and high resistance to breaking
- Connection elements between fork and frame made of high grade steel



model	size (mm)	payload (kg/mm)
3A	120x45x1800	1500*500



Carrying frame

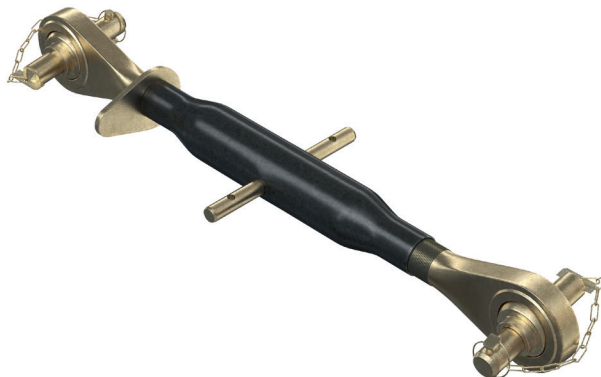
- Precision made, guarantees 100% compatibility of each fork delivered with forklift trucks
- Made from high-grade steel
- During quality control tests, VT (visual), MT (magnetic particle) welded joints are checked, and UT (ultrasonic) tests are carried out at the bending site

## 3-point linkage/suspension



- ≡ **Three-point linkage**  
Front frame, a supporting frame assembly constructed of a casting.  
Rear frame, a welded frame connects the structure to the trailer.

**A cast frame provides 100% greater strength than welded.**

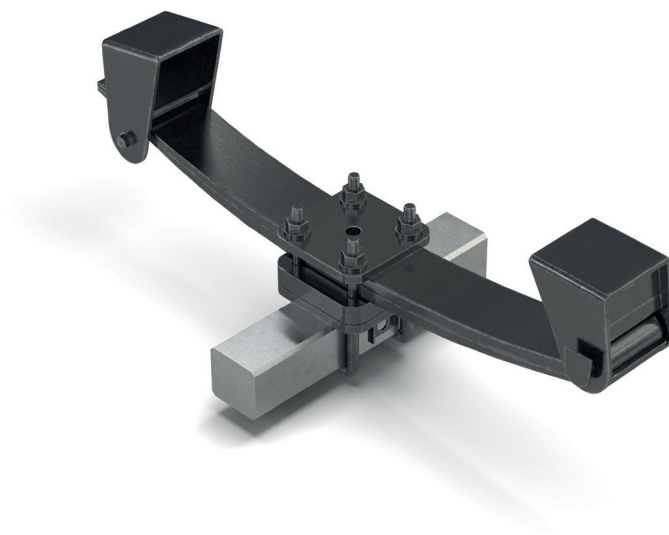


- ≡ Part of a 3-point suspension system suspension system. Connects tractor or machine to the trailer. It is characterised by the highest strength and flexibility: resistant to all possible mechanical damage, prevents breaking when driving over uneven ground.

Centre coupling C330

# Suspensions for trailers and manure spreaders

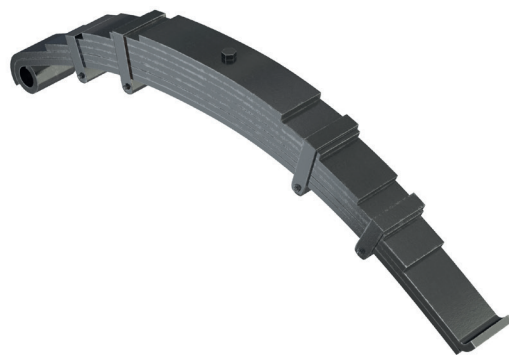
- Self-lubricating bushings are fitted in the precisely machined fixing holes, which can withstand thousands of kilometres without burning the fastening bolt spring in the running gear.



Parabolic suspension



Parabolic spring



Leaf spring

# HYDRAU

Heavy agricultural work, such as hauling bales or unloading crops, depends on the hydraulics used. We are well aware of how much depends on the quality of this type of equipment. That is why, as experienced personnel, we pay attention to precise workmanship as well as environmentally friendly processes. We know that only clean and good quality hydraulic oil can ensure safe and failure-free operation. We strive to ensure that the operation of our products is free from the risk of poisoning users and the soil. We are able to manufacture virtually any type of hydraulic cylinder or telescopic cylinder for use in the agricultural engineering industry.



# LIICS

Hydraulic cylinders \_\_\_\_\_

16

Telescopic cylinders \_\_\_\_\_

16

Pressure gauges, Joysticks, Cables,  
Solenoid valves, Manifolds \_\_\_\_\_

17

# Hydraulic cylinders

- ≡ Single-acting - with one oil connection
- ≡ Double acting - with two oil ports
- ≡ Oil grade - HLV 32 - for new machines
- ≡ High-quality seals ensure a fully sealed cylinder, which prevents corrosion inside the cylinder.



Hydraulic cylinder RW3

- ≡ Quality level of welded joints in accordance with ISO 5817
- ≡ Painted in two stages, surface carefully prepared:
  1. epoxy primer
  2. polyurethane paint
- ≡ Meticulous quality control: tightness test, internal and external leakage testing, testing of welded joints and anti-corrosion coating (galvanic - chromium plated)  
Tested in a salt chamber min. 480h
- ≡ Corrosive atmosphere testing ISO 9227
- ≡ Smooth casing, so they are easy to clean after use and remain tight

# Telescopic cylinders



ST3 actuator + cradle

- ≡ Chrome-plated steps
- ≡ Painting of outer main pipe: epoxy primer and polyurethane paint.
- ≡ High-quality sealing - is able to work in temperatures from -45 degrees to +120
- ≡ Steps and body made of structural steel
- ≡ The pivots, cradle fixing points and the bottom of the telescope are made of double thickness steel, so they can withstand even the highest tipping loads.

## Pressure gauges



Pressure gauge

## Joysticks



Transmission - joystick

## Cables



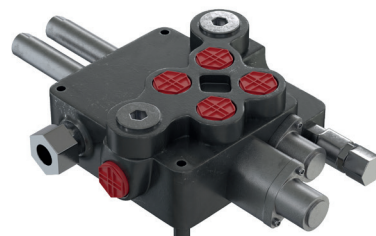
Cable 2000

## Solenoid valves



Solenoid valve 60L

## Manifolds



Manifold

# TRANSM

Our aim is to ensure SAFE and FAULTLESS work. This is only possible by using high quality parts. Properly selected technical parameters ensure a longer life cycle for gears, PTO shafts, bearings, sprockets and V-belts with chains. The transmission is primarily the power transmission shafts that connect the agricultural tractor to the machine. Made from high-grade steel, they help to significantly slow down the wear and tear of the drive part of the agricultural tractor and accompanying

machinery. A long life cycle is possible thanks to precision-made spline channels and a plastic cover resistant to UV rays and extreme temperatures.



# MISSION

**PTO shafts** \_\_\_\_\_

20

**Bearings** \_\_\_\_\_

21

**Bevel wheels** \_\_\_\_\_

22

**Sprockets** \_\_\_\_\_

22

**Gearboxes, Belts, Chains** \_\_\_\_\_

23

## PTO shafts



- Shafts suitable for speeds from 540rpm to 1000rpm
- With lengths from L700 to L1000 and a torque transmission from 210Nm to 3500Nm
- Any type of shaft can be supplied.

Shaft

### Spare parts



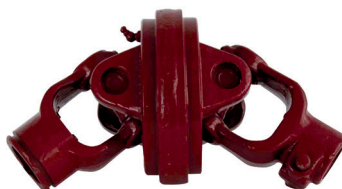
Profile



Cross joint



Joints



Couplings

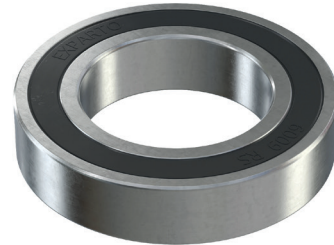


Reduction profiles

# Bearings



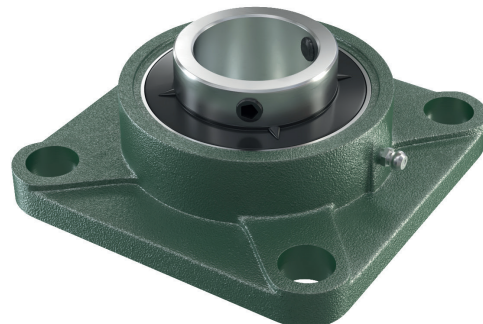
CBK 320



2RS 6009



UCFL 205

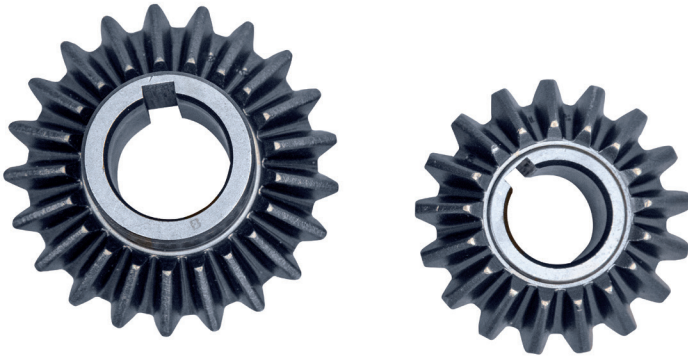


UCF 207

- Due to the precision-made bearing steel rings, the components wear slowly over the years. The used bearing parts (e.g. balls) are checked for hardness, roundness and diameter.

- In combination with grease, they do not burn when transferring the maximum load. The inner ring is heat treated and then ground, ensures easy and problem-free installation.
- Installation on new and used machines.
- Any type of bearing can be supplied.

## Bevel wheels



- They transmit force through the drive coming from the shafts, so the mounting holes are made to an accuracy of 0.01mm. Gear elements can be heat treated to increase the life cycle of the machine. The pitch diameter is tested by using special inspection and measuring tools
- Bevel gears:
- forged, milled, spiral
  - small 1,65, large 1,85

Bevel wheels

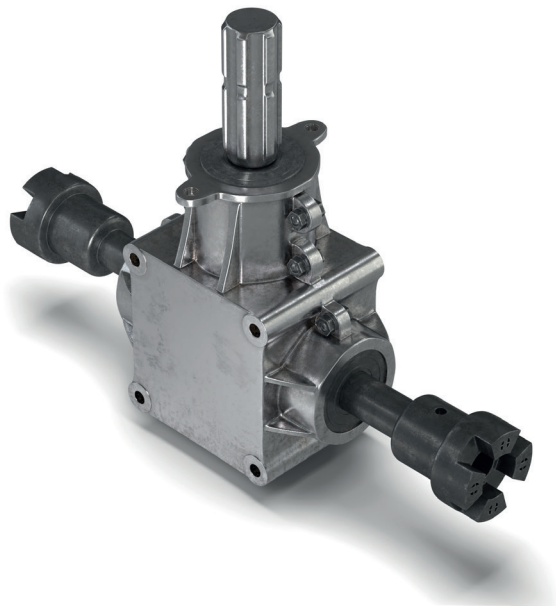
## Sprockets



- For use on machines such as: rototillers, wrapping machines, balers

KL06

## Transmission



Spreader transmission

## Belts



V-belt

## Chains



Chain for wrapping machine  
and rototiller



Chain for planter

# HEALTH AND

It is the duty of the employer to ensure safe and hygienic working conditions. It is extremely important that the personal protective equipment used is of the highest quality, as only such will fully protect life and health. Our products meet the stringent requirements for protective clothing. Our aprons and welding sleeves are characterised by the high quality of leather which ensures not only protection but also comfort at work for the user.



# SAFETY (H&S)

Welding clothing

26

Protective gloves

27

# Welding clothing

## Welding protective clothing

A range designed for welders, metallurgists and blacksmiths: high heat capacity, protection against splashes and burns with maximum working comfort.



Front apron REGULAR



Sleeve REGULAR

CATEGORY 1

Cowhide, soft

Adjustable fastening on shoulders and hips



2121X



411X4X



TYPE A  
CAT. II



Welding gloves



Welding jacket UNIQUE



Welding footwear

# Protective gloves



Assembling work glove NiroS TEC 1023



Assembling work glove Niro-s PURE  
(.profit' substitute)



Work glove Gorilla STEELPRO



Cut Resistant Glove NiroS TEC 3007



Cut Resistant Glove Niro-s 3006 ECO



Niro-s 5008



NiroS 1022



Protective glove Adler- D



**EXPARTO s.c.**

16-100 Sokółka  
Ul. C.K. Norwida 8  
NIP: 545-181-36-99

+48 570 099 777

[biuro@exparto.pl](mailto:biuro@exparto.pl)

[www.exparto.pl](http://www.exparto.pl)